



KONUNGARIKET SVERIGE

VARUMÄRKE NUMMER 402835

Therapeutic Crystal Peeling Effect 150 ml

- No-Parabens
- No-S.L.S
- For all skin types

Description:

A peeling cream that polishes the epidermis (the outer layer of the skin) by means of Micro-Crystal (natural mineral crystals) The unique action of the natural crystals rejuvenates the skin, prevents the formation of fine lines and firm facial skin, peeling also contains a combination of essence of green tea for revitalization and smoothness, antioxidants for maximum protection from free radicals, and soothing additives. The peeling action is suitable for both men and women.

Direction: Apply Therapeutic Crystal Peeling Effect onto clean skin with circular skin movements. Leave for three minutes minimum before rinsing off with water.

Ingredients:

WATER (AQUA), ISOPROPYL MYRISTATE, PROPYLENE GLYCOL, STEARIC ACID, SOLUM DIATOMEAE, GLYCERYL STEARATE SE, CETYL ALCOHOL, Prunus Amygdalus Dulcis (Sweet Almond) Oil, TRIETHANOLAMINE, KAOLIN, IMIDAZOLIDINYL UREA, BENZYL ALCOHOL, METHYLCHLOROISOTHIAZOLINONE, METHYLISOTHIAZOLINONE, PARFUM, BENZYL BENZOALE, BUTYLPHENYL METHYLPROPIONAL, GERANIOL, LINALOOL

Caution:

- Use this cosmetic product only for the purpose it was intended for and according to the use instruction.
- Use this cosmetic product only if there is no known sensitivity to any of the ingredients.
- Do not swallow or ingest.
- Avoid direct contact with eyes. In case if eye contact, wash well with water.
- Expel from children touch.
- Keep away from direct heat, sunlight or fire. Store in a cool and dry place.

What are the benefits of Therapeutic Crystal Peeling Mask treatment?

Micro crystal clear skin system is the perfect treatment as it delivers visible, results. It is suitable for all skin colours and all skin types and can be used to treat a wide range of skin problem on the face.

Results applications include:

- A complete perfect facial
- Perfect for aging skin as it visibly reduces fine and wrinkles
- Pigmentation
- Sun damaged skin

1) Therapeutic Crystal Peeling Mask Treatment

- Provides immediate and visible results for ageing skin, lines and wrinkles, open pores, blackheads, pigmentation, blemish scars, acne scars, stretch marks and so much more. You'll see the difference after just few treatments.

2) With Regular Treatment

- The skin increases its collagen and elastin formation, giving you a naturally firmer and rejuvenated appearance. Building on this, the gentle vacuum action gives the facial muscles a mini workout each time, providing an immediate lifting effect and an on-going improvement in tone.

Therapeutic Crystal Active Ingredients:

- Micro-Crystal (natural mineral crystals)
- Runus Amygdalus Dulcis (Sweet Almond) Oil
- Green Tea

PRUNUS AMYGDALUS DULCIS (Sweet Almond) Oil



Description:

Almond oil is acquired from dried almonds through a process called cold pressing. The good thing about using this skin care product is the benefits derived from its vitamins such as E, A and D. It is also rich in oleic and linoleic acids. It is mostly used as a skin care product but is also used as medicinal oil for some skin disorders.

Benefit of almond oil in Therapeutic Crystal Peeling Mask

Moisturizing

- Almonds have a way of trapping moisture in the skin keeping it moisturized at all times. Better still, its high lubricating quality makes many users stick to using it as their daily skin care product.

Anti-inflammation

- This oil has also been proven to have a calming effect on people with skin allergies and inflammation. It has both the ability to soothe as well as treat skin allergies. Minor wounds, chapped skin, and other skin infections can also be treated using almond oil.

Emollient Properties

- Emollient properties refer to the ability of the almond oil to get absorbed into your skin. It is also used in many spas for its less fragrant and less greasy qualities. It is also useful in massages as it restores the normal PH of the skin and allows the skin to glow thus preserving moisture.

Benefit of almond oil in Therapeutic Crystal Peeling Mask

Removing Dark Circles

- Its lightening ability is another reason that has made this oil popular among many people with dark marks on their skin. All you need to do is mix some almond oil with some honey and apply on the affected area.

Reducing Wrinkles

- Almond oil contains vitamins that help it delay the appearance of wrinkles. It is best to apply almond at night after taking a shower. You could choose to do this twice a week or alternate days depending on how soon you wish to see the end results.

Sun Protection

- Harmful ultraviolet rays cause wrinkling, sunburns, aging, and skin cancer. Though sun - blocks and sunscreens are effective. Almond oil can help reverse the damages brought about by sun exposure.

GREEN TEA

It contains a high amount of antioxidants as well as enzymes, amino acids, and phytochemicals like polyphenols. It also has B vitamins, folate, manganese, potassium, magnesium and caffeine.

In addition to its health benefits, green tea has an impressive list of skin and hair care benefits. To enhance your beauty we use green tea in Therapeutic Crystal Peeling Mask treatment

Benefit of Green Tea in Therapeutic Crystal Peeling Mask

Improves Skin Complexion

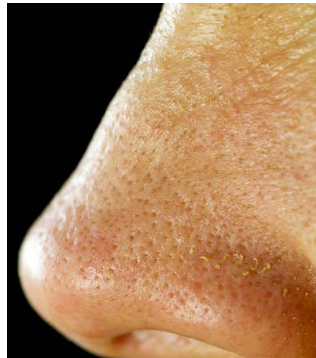
- Green tea improves your skin complexion and makes your skin healthy. It helps flush out toxins from the skin, heals blemishes and scars, and reduces inflammation. It even improves the skin's elasticity.

Fights Aging Signs

- Green tea has anti-aging and antioxidant benefits that can help delay signs of skin aging, such as sagging skin, sun damage, age spots, fine lines and wrinkles.
- The polyphenols in green tea help neutralize harmful free radicals, which can cause significant damage to the skin and accelerate the aging process.
- In addition, it helps fight prevent skin cancer.

Shrinks Open Pores

- Due to its antioxidant and astringent properties, green tea can help shrink enlarged pores that tend to get clogged and eventually get infected with bacteria. Thus, it will help smooth and tighten your skin.



Treats Acne and Pimples

- The catechins in green tea are antibacterial agents that help fight acne-causing bacteria. Catechins even help regulate hormonal imbalances in the body, one of the key causes of acne.
- In addition, anti-inflammatory property of green tea helps reduce the redness and inflammation brought about by acne.

Works as Skin Toner

- This popular beverage also works as a natural toner for your skin. It helps draw out impurities, reduce large pores and give your skin a nice healthy glow. It even helps keep your skin hydrated, which is essential for healthy skin

Exfoliates Skin

- The slight rough texture of green tea helps exfoliate your skin to get rid of dead skin cells, dirt and other impurities

Protects against Sun Damage

- Green tea can even protect your skin from harmful ultraviolet (UV) rays of the sun. The tannic acid, theobromine and polyphenols in green tea can help soothe and heal sunburned skin by neutralizing the damage from exposure to UV rays.

Description of Product:

Name of Product: Therapeutic Crystal Peeling Effect

Volume/weight : 100/150 ml

Nature of packaging (e.g. polypropylene tube/glass bottle/gold ball) : Airless Container/
Plastic Tube

pH: 5.0-7.0

Target Consumer:

Children <14 years : No

Infants <3 years : No

Adults : Yes

Intended Use:

Frequency (e.g. twice a day) : 1-2 times a week

Location (e.g. eye area) : Face Area

Leave on or rinse off product : Rinse Off

Class of product (choose one of the following: decorative cosmetic, skin care, perfume, toiletry, intimate external hygiene) : Skin Care

For how long? = 1 years

Adverse effects reported? (Frequency and type) = Non

Percentage concentrations of INCI ingredients supplied (must total 100%)

Perfume/Fragrance:

Product name: Blue Love

Percentage of Perfume in product = 0,01%

Plant Extracts (incl. essential oils)

Quantitative allergen listing (26 allergens listed in Cosmetics Directive 76/768/EC) : NA

Tests Conducted

Microbial Content : Yes

Preservative Efficacy (Challenge test) : NA

Heavy metal content : NA

Use instructions: Apply a few drops on clean face. Tap gently until absorbed.

Therapeutic Crystal Peeling Effect & Safety –

We do not use the following ingredients:

NO Hydroquinone – An ingredient that was once considered a leading bleaching agent.

Now it is considered unsafe when used in cosmetic preparations.

Today, the use of Hydroquinone as a bleaching ingredient is banned in many countries,

including the member states of the European Union under Directive 76/768/EEC: 1976. once considered a leading bleaching agent.

Now it is considered unsafe when used in cosmetic preparations. Today, the use of Hydroquinone as a bleaching ingredient is banned in many countries, including the member states of the European Union under Directive 76/768/EEC: 1976.

NO Arbutin – A glucosylated Hydroquinone, which may carry similar cancer Risks.

Its usage is restricted in many countries as it may be hazardous.

NO Kojic Acid – An additional lightening ingredient that is restricted in many countries, due to its potential to cause sensitivity and skin irritations.

The European scientific committee on Consumer Products (SCCP) suggested to limit its usage level as it may pose risk to consumers' health.

NO Hydrogen Peroxyde – a bleaching ingredient that may cause mild to severe stinging, burns and irritations

Shelf Life: 36 months

Period After Opening: 12 months

Product Formulation

PRODUCT:

Melli by Dr.makeup

Therapeutic Crystal Peeling Effect

150 ml Plastic Tube\ Airless Container

No	Ingredients	%	Function
1	AQUA	A	Solvent
2	ISOPROPYL MYRISTATE	D	Emollient
3	PROPYLENE GLYCOL	E	Emollient
4	STEARIC ACID	E	Emulsifier
5	SOLUM DIATOMEAE	E	Abrasive
6	GLYCERYL STEARATE SE	E	Emulsifier
7	CETYL ALCOHOL	E	Emulsifier
8	Prunus Amygdalus Dulcis (Sweet Almond) Oil	F	Skin Conditioning Agent
9	TRIETHANOLAMINE	F	Viscosity Controlling
10	KAOLIN	F	Absorbent
11	IMIDAZOLIDINYL UREA	G	Preservative
12	BENZYL ALCOHOL,	G	Preservative
13	METHYLCHLOROISOTHIAZOLINONE	G	Preservative
14	METHYLISOTHIAZOLINONE	G	Preservative
15	PARFUM	G	Perfume
16	BENZYL BENZOALE	G	Preservative
17	BUTYLPHENYL METHYLPROPIONAL	G	Preservative
18	GERANIOL	G	Preservative
19	LINALOOL	G	Preservative
	TOTAL	100,000	

KEY: (A): 100%-60% ; (B): 59.9%-30% ; (c) 29.9%-10% ;
 (D): 9.9%-5% ; (E): 4.9%-2.5% ; (F): 2.4%-0.5% ; (G): 0.4%-0%